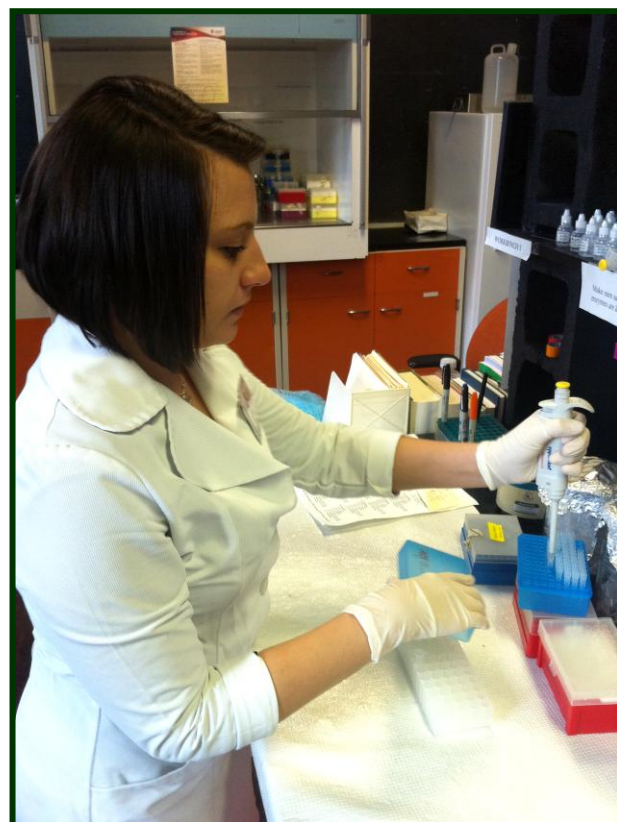


Discovery Through Research

Wood Hudson Cancer Research Laboratory is one of less than a dozen independent cancer research organizations in the United States. In contrast to a university, where the primary objective is education, or a hospital, where patient care is the primary objective, *Wood Hudson has as its primary objective cancer research.*

Founded in 1981 by scientists whose objective was the research and study of cancer and the establishment of a laboratory to that end. Wood Hudson is a publicly supported, not-for-profit organization. It is recognized as a 501(c) (3) organization by the Internal Revenue Service.

Wood Hudson is dedicated to scientific inquiry leading to new knowledge which can assist in eliminating cancer. More than 98% of the operating budget of Wood Hudson goes into research.



931 Isabella Street
Newport, Kentucky 41071
(859) 581-7249
www.woodhudson.org



Mission Statement

Wood Hudson Cancer Research Laboratory, Inc. is a professional, independent, not-for-profit, publicly supported, research institute dedicated to the discovery of new knowledge regarding the causes, diagnosis, treatment, and prevention of cancer. Because the Laboratory is a not-for-profit enterprise, no organization or individual profits financially from its operation and all discoveries resulting from ongoing research are freely given to the scientific and medical community through promptly reported peer-reviewed publications.

Wood Hudson approaches the cancer problem in three ways:

- 1) The study of clinical cases** and experimental models of cancer to learn new methods of cancer prevention, diagnosis, prognosis, and treatment.
- 2) The study of environmental causes** of cancer, particularly food and drinking water chemicals.
- 3) The provision of training and “hands-on” research experience** for tomorrow’s scientists and physicians through our Undergraduate Research Education Program.



WOOD HUDSON ACCOMPLISHMENTS

- **PUBLISHED** OVER 157 SCIENTIFIC REPORTS AND ARTICLES
- **STUDY** 14 DIFFERENT TYPES OF CANCER
- **DETERMINING** ENVIRONMENTAL CAUSES OF DIFFERENT TYPES OF CANCER
- **CREATED** A MODERN SCIENTIFIC LABORATORY THROUGH ADAPTIVE REUSE OF A CLOSED SCHOOL
- **RENOVATING** HOMES IN A FORMERLY BLIGHTED NEIGHBORHOOD TO PROVIDE AFFORDABLE RENTAL PROPERTIES AND FUNDING NEEDED FOR WOOD HUDSON
- **DEVELOPING** AND MAINTAINING RESEARCH FACILITIES USING STATE-OF-THE-ART EQUIPMENT



We are living with cancer...

- *40% of Americans will develop cancer in their lifetime.*
- There will be 1,665,000 new cases of cancer in the U.S. this year.
- 590,000 Americans will die of cancer in 2015, with 1,600 dying each day.
- Cancer will cost the U.S. over \$260 billion in the year 2015 alone.
- **Kentucky has the highest rate of cancer diagnosis and the greatest rate of cancer caused deaths in the United States.**

Today's Research... For Tomorrow's Cure

Perpetuating Scientific Inquiry

As an organization founded by scientists, Wood Hudson is committed to educating young minds and motivating participation in formal scientific inquiry.

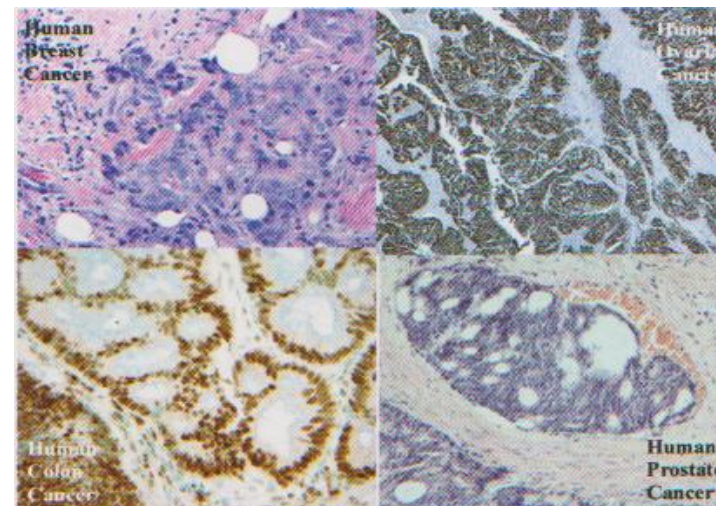
Through the Undergraduate Research Education Program (UREP), students from universities around the tri-state are employed by the laboratory.

The "hands-on" experience gained through our program helps many students obtain admission to graduate or medical school, or secure a position in research. The financial assistance these students earn helps to pay for their college tuition.

WORKING TOWARDS THE CONQUEST OF CANCER

Human Breast Cancer

Human Ovarian Cancer



Human Colon Cancer

Human Prostate Cancer

A Vital Focus

40% of Americans will develop cancer in their lifetime; 50% of men, 33% of women. Wood Hudson has a passion for studying cancer. Our challenge is to discover new knowledge leading to new means of cancer prevention, diagnosis and treatment.

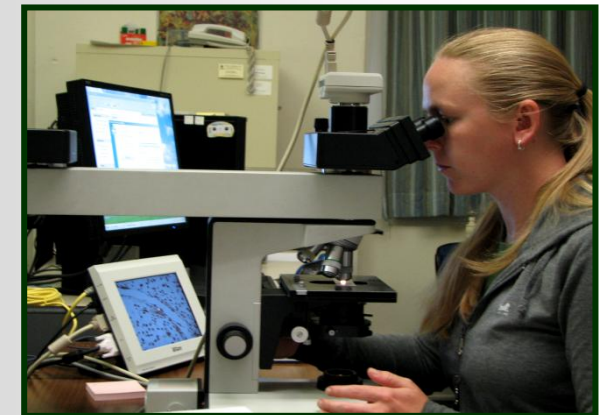
Wood Hudson's research targets cancer of the breast, colon, prostate, ovary, pancreas, kidney, lung and bladder, mesotheliomas and melanomas. These projects involve collaborations with scientists and physicians from hospitals, universities and related industries.

Collaborative research with scientists from the U.S. Environmental Protection Agency is focused on the environmental causes of cancer, particularly in food and drinking water chemicals.



Training Tomorrow's Leaders

Fostering the future careers of scientists, physicians and educators today impacts our ability to research, treat, and prevent cancer tomorrow. Wood Hudson has trained over 260 undergraduates, over 80% of whom have chosen careers in science and medicine.



Conquering Cancer Through Research

Exploring and understanding genetic markers for cancer susceptibility can stop cancer before it starts. Our patient-oriented cancer research is translating studies of human tumors into new diagnostic and treatment methods.



Visit woodhudson.org to Donate!

Isn't it time you joined the fight to end cancer? Your donation to Wood Hudson Cancer Research Laboratory will help fund the discoveries that are conquering cancer through research, protecting your environment and training tomorrow's leaders in biomedical research and medicine.